



This chart depicts common bacteria that is identified by the MicroVet Color-Spot microbiology system. Some bacteria may appear slightly different than those pictured due to specimen preparation and inoculation, however the colors will be consistent. For additional images , refer to your users manual. For additional assistance, our technical support team is always available.

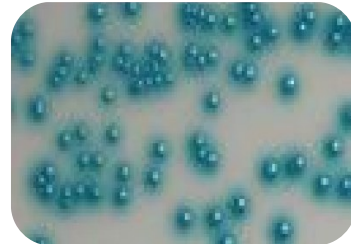
Gram Positive



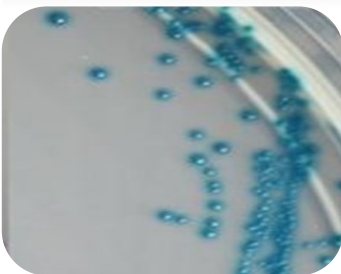
Staph aureus / intermedius



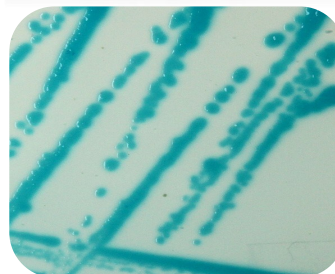
Staph saprophyticus



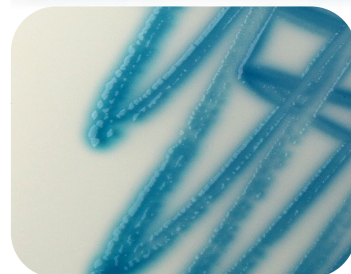
Enterococcus spp



Enterococcus faecalis

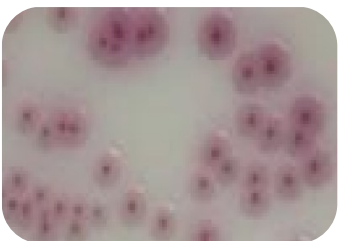


Strep equi

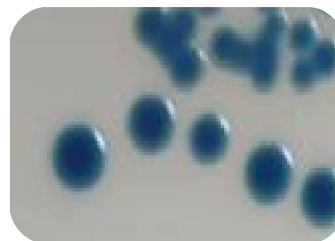


Listeria spp (GP rod)

Gram Negative



E. coli



Klebsiella, Enterobacter & Serratia spp



Citrobacter spp



Proteus spp



Pseudomonas spp



Yeast

Candida spp.